


Public View Monitor – Installation and End User Guide

Download Setup

Download the Public View Monitor Application by navigating to DownloadVI.com and downloading the latest version of Public View. Be sure to save it to an accessible location to be used to upload to the Server you will use to host public view.

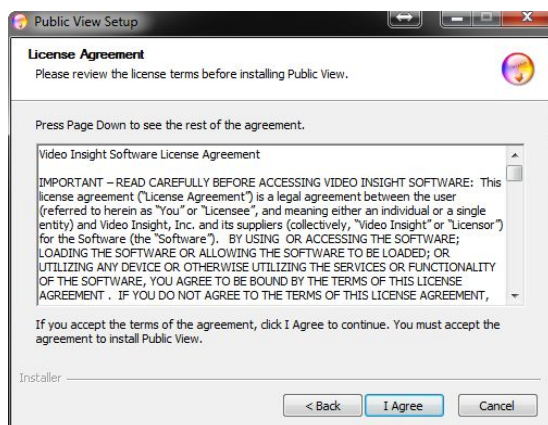
Name	Date modified	Type	Size
 PublicViewSetup	1/27/2016 9:53 AM	Application	54,760 KB

Installation Process

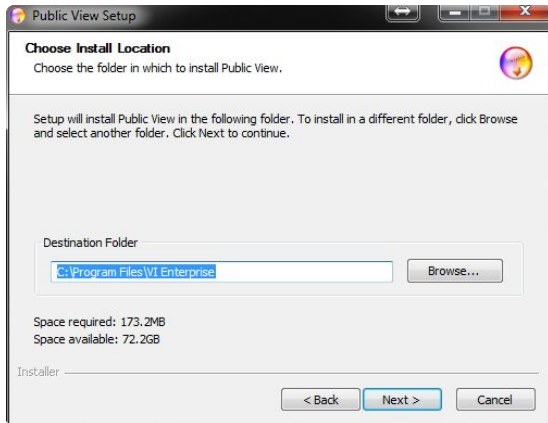
Once the file is saved and transferred it to the server that will be used to run Public View Monitor, double click the file to start the installation process.



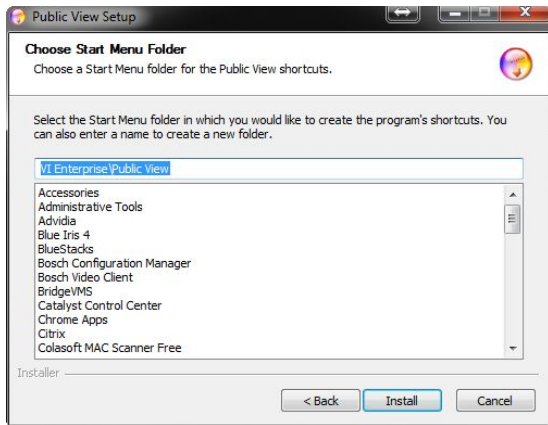
Click Next on the Welcome Setup Wizard screen.



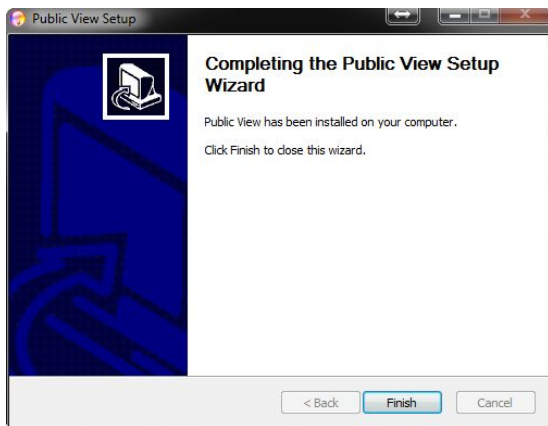
Select **I Agree** from the License Agreement page.



Choose the Installation location. The setup will install the application to the default location of C:\Program Files\VI Enterprise. This location should match the location of all IP Server installation files. To change this location, click **Browse**. Click **Next** when completed.



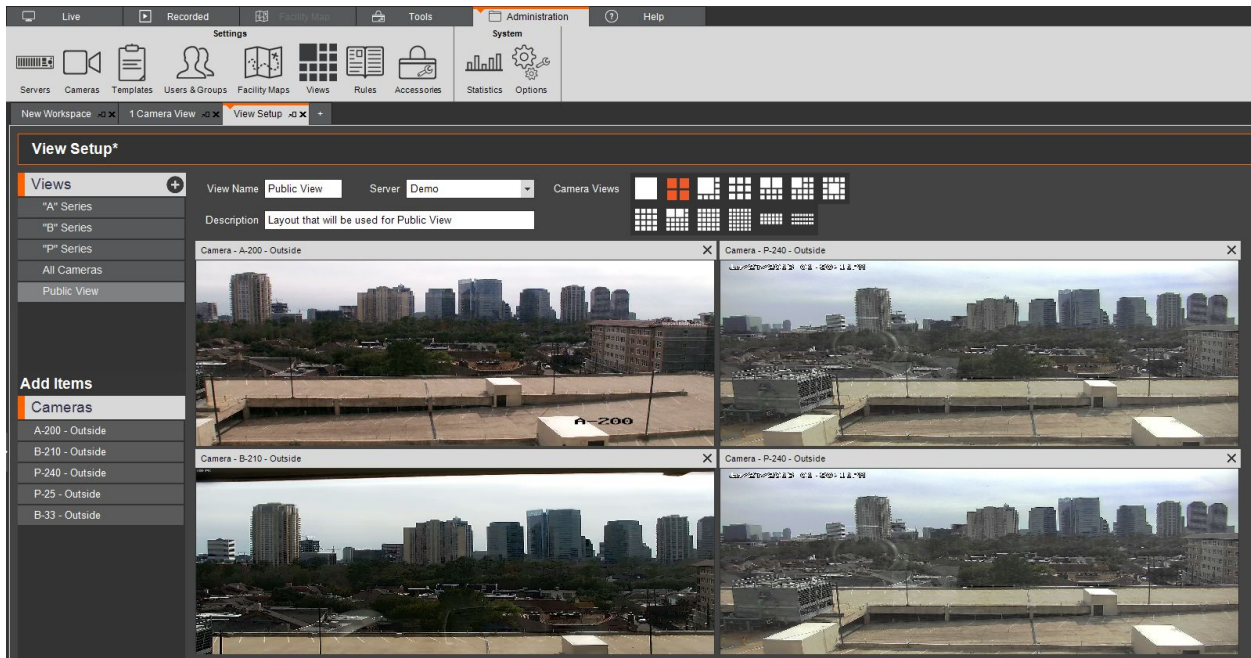
Click **Install** to save the Public View Setup to the Start Menu.



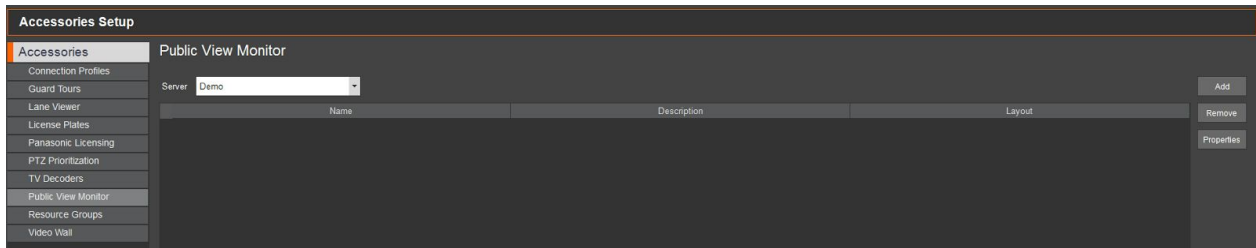
Click **Finish** to complete the installation.

Configuration

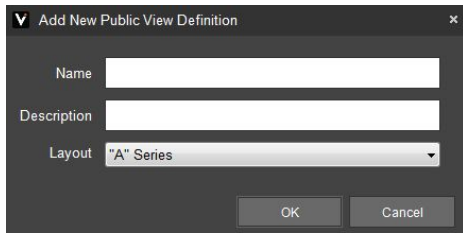
After the installation is complete, launch VI Monitor and click on Administration > Views. Create the layout you want visible in Public View Monitor Application. Be sure to name this View for quick reference later.



Once the View is created, click Administration > Accessories and select Public View Monitor in the left tree.



Click **Add**. Create a name and description for your Public View Window and select the View you wish to display.



▼ Add New Public View Definition x

Name

Description

Layout "A" Series ▼

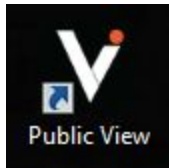
OK Cancel

Click **OK** and then **Apply** in the Public View Monitor area to save your changes.

Note: *The **ONLY** layouts that will show in the Public View Monitor menu are going to be the layouts you put in the public view Monitor layout list, not the Monitor Station layout list.*

Accessing Public View Monitor

On your client computer that you plan to use public view on, use the same installation files you used in your server setup on Page 1. Once the install is complete, locate the public view Monitor icon on the desktop.



Double click to run Public View Monitor application.

Setup

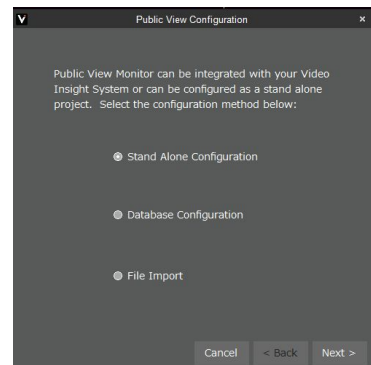
Upon initial launch, you will need to configure database information. Public View Monitor can be integrated with your Video Insight system (Database Configuration) , stand alone configuration or setup by file import configuration.

Stand Alone Configuration:

This method allows the Public View Monitor to discover, attach and display cameras independently of the Video Insight IP Server.

To begin, Click Auto Discovery to auto locate your cameras on your network, or manually add your camera by selecting the Manual Entry button. You can also import selected cameras from a Video Insight database on the network by choosing the Import button.

Once you've selected the cameras to view, click Next to choose a layout grid that will determine the order in which the cameras are visible. Once you've selected the appropriate layout, click Finish.



Database Method:

Ensure all required ports are opened on the firewall and router if connecting outside of the network. Enter in all required information for database configuration. Enter the IP address of the server's database you wish to locate the layouts for Public View Monitor form. Once the database information is submitted, click **Load** and select your Public View Layout created in VI Monitor.

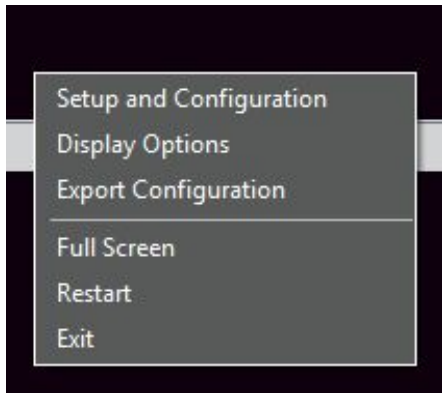
File Import Method:

This method allows the Video Insight Administrator to create a simple configuration file that can be imported into Public View Monitor. Anytime the client computer boots up or Public View Monitor is launched, it will go directly to the selected layout under the Public View Layouts.

Note: *You can install Public View Monitor on multiple machines and just change the SQL Server Location IP address to which ever server you want it to look at. One way that you are able to get all layouts from all locations is to share the SQL Database between all client computers. There may be some problems in getting the communication to work **outside** of the network, but for internal use, this method works well.

Public View Options:

Right clicking on the Public View Option will display a few different configuration options. These options are detailed in the table below.



Setup and Configuration	Allows the user to enter Setup mode.
Display Options	This setting allows the user to display options to cycle layouts, and display headers.
Export Configuration	This setting allows the user to export the configuration file used for Public View Monitor. This file can be shared and used during the import file method of set up on separate client machines.
Fullscreen	When toggled, this setting is used to enter/exit full screen mode.
Restart	When used, the application will restart.
Exit	This setting is used to exit the application.